



# MyShowcase

INTUITIVE DESIGN / POWERFUL PLATFORM / IMMERSIVE EXPERIENCES  
USER DRIVEN EXPERIENCES JUST GOT AN UPGRADE

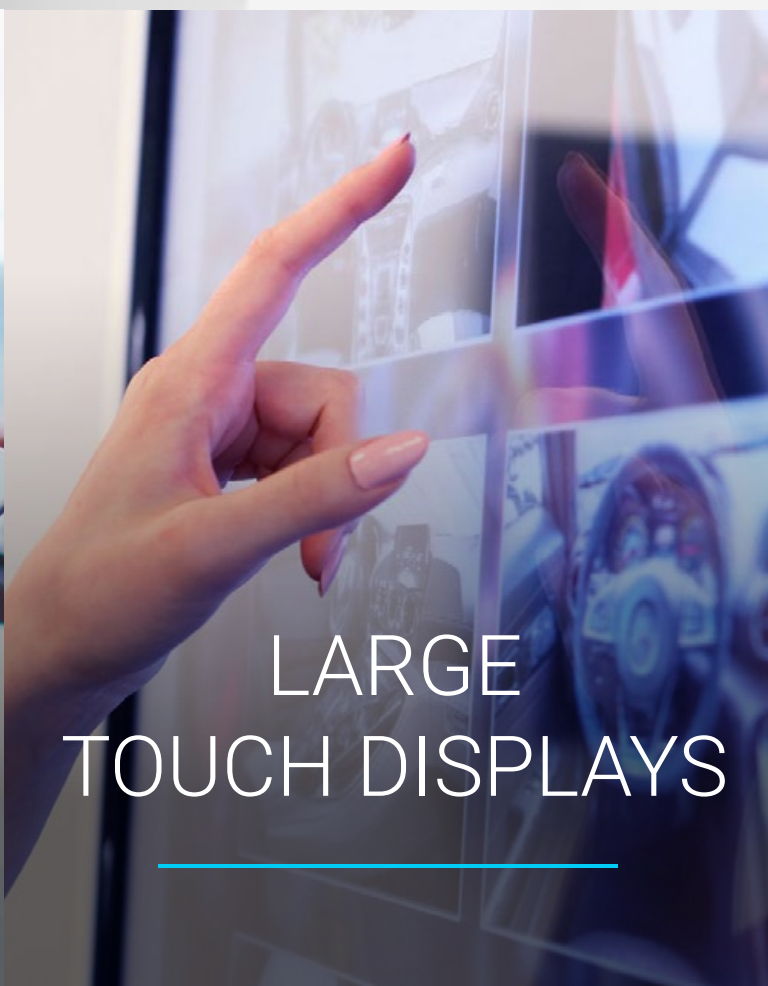


# COMPATIBILITY

BOOTH SALES EMPOWERMENT INTERACTIVE PRESENTATION INTERACTIVE DONOR WALL AWARD TOUCH WALL WAYFINDER INTERACTIVE  
H & LEARNS INTERACTIVE DIGITAL SIGNAGE INTERACTIVE TRADE SHOW BOOTH TOUCH DIRECTORY LUNCH & LEARN PRESENTATIONS TOUCH DIRE



WINDOWS  
TABLETS



LARGE  
TOUCH DISPLAYS



TOUCH  
TABLES



INTERACTIVE  
KIOSK



VIDEO WALL  
INSTALLATIONS

ROOMS SALES OFFICES INNOVATION SPACES EVENTS RETAIL ENVIRONMENTS PRODUCT LAUNCHES ENVIRONMENTS PRODUCT LAUNCHES  
ITS RETAIL ENVIRONMENTS PRODUCT LAUNCHES LOBBIES UNIVERSITIES MUSEUMS SHOWROOMS SALES OFFICES INNOVATION SPACES EVEN  
OVATION SPACES EVENTS RETAIL ENVIRONMENTS PRODUCT LAUNCHES LOBBIES UNIVERSITIES MUSEUMS SHOWROOMS SALES OFFICES  
S OFFICES INNOVATION SPACES EVENTS RETAIL ENVIRONMENTS PRODUCT LAUNCHES LOBBIES UNIVERSITIES MUSEUMS SHOWROOMS S



# HIGHLIGHTS



Inline editing for instant publishing



Modern UI/UX design



No coding or design experience required



Always on auto interactions to engage guests



Works with or without internet connection



Remote access compatible<sup>1</sup>



Bundled options with hardware



Unlimited device license transfers



World class phone & remote support



Professional graphic design team<sup>2</sup>



Fast turnkey implementation service<sup>2</sup>



Onsite setup and support<sup>2</sup>

<sup>1</sup> Requires 3rd party software (i.e. TeamViewer)

<sup>2</sup> Additional services



# CONTENT MANAGEMENT

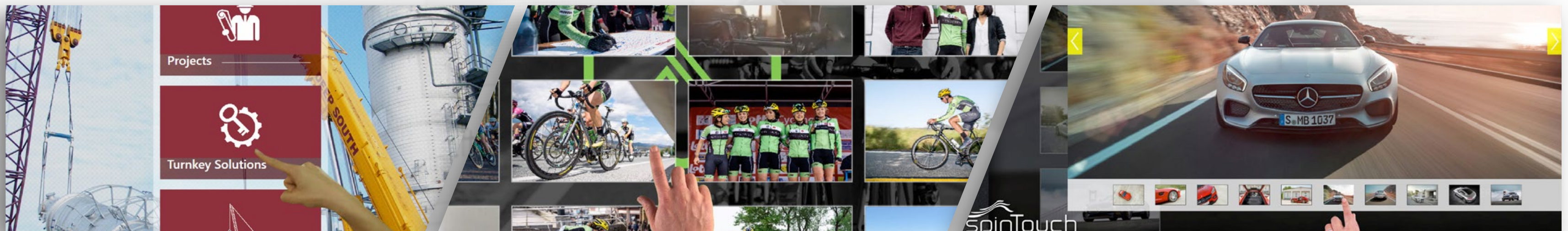


Intuitive content management tool makes it **enjoyable and effortless** for anyone to create eye-catching presentations.

Simply upload your digital assets and publish. No design experience necessary.



WATCH HOW EASY IT IS TO UPDATE CONTENT





# SHARE FEATURE & LEAD CAPTURE

With myShowcase, **visitors can share content directly to their emails** which allows you to capture contact information, gather data on consumer interests, and tailor your marketing to match their unique needs.

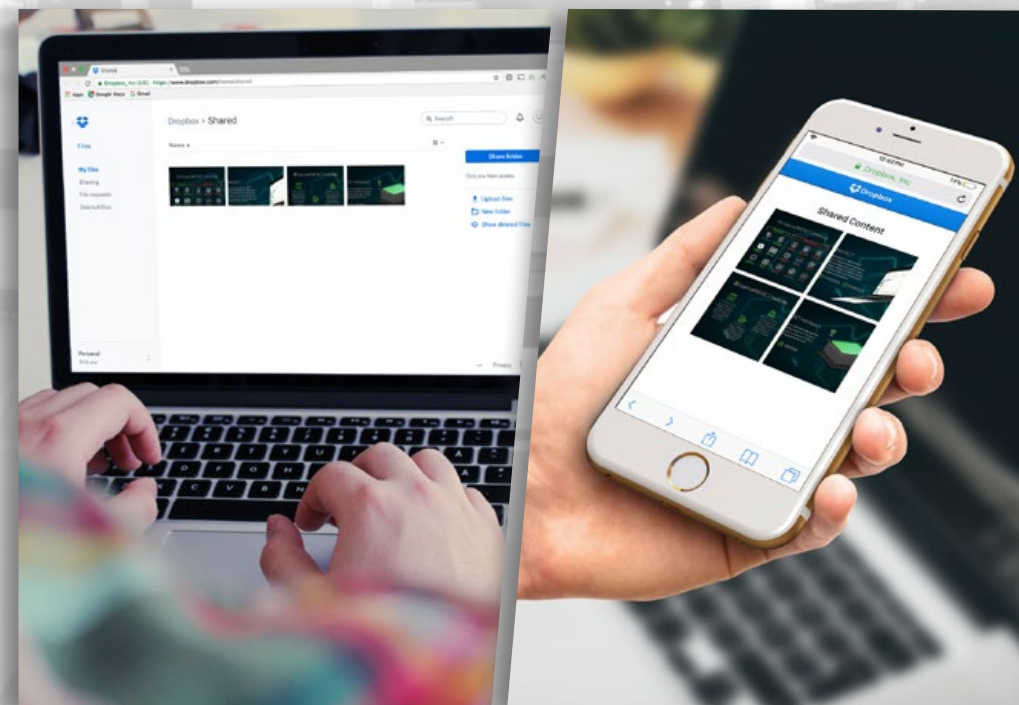
Go beyond the touch screen to stay in touch with your audience and turn viewers into leads.



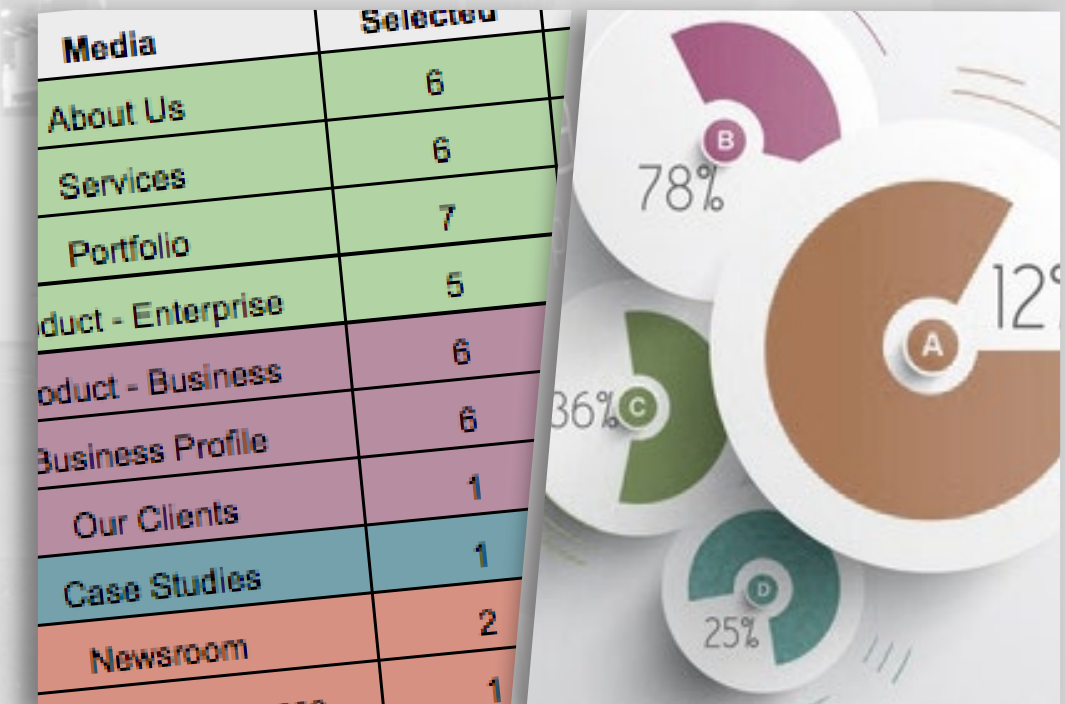
WATCH A DEMO OF THE SHARE FEATURE



*myShowcase captures visitor information and generates leads by allowing guests to share content of their choosing from your presentation.*



*Content will be sent via a cloud link or as an attachment in an email for instant access on all mobile devices.*



*Receive a full analytics report to track engagement, gain insights into audience preferences, send targeted follow up, and increase qualified leads.*



# MULTI-USER & OMNI-DIRECTIONAL INTERFACE

Elevate your presentations with the perfect solution for large touch displays and tables.



---

*myShowcase Pro allows multiple guests to interact with different content at the same time with zero interference.*



---

*Visitors can adjust content to any height on the display for a truly customized interactive experience.*



---

*Content freely rotates in all directions to accommodate the orientations of multiple users.*

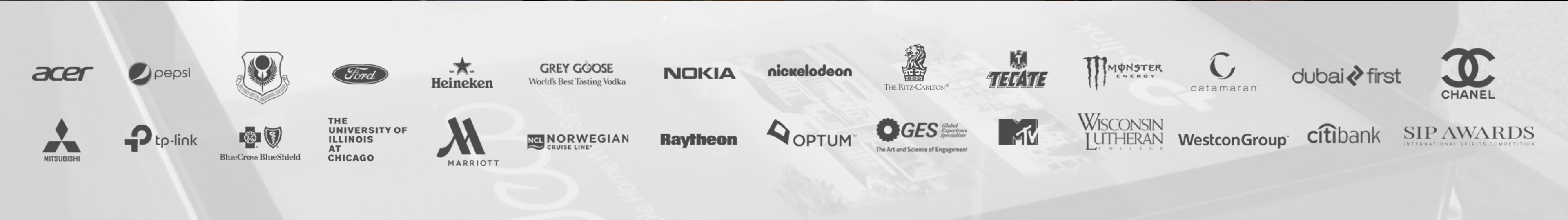


---

*Give visitors the power of choice by allowing side to side comparisons directly on the interface.*



# TRUSTED BY LEADING ORGANIZATIONS







# MyShowcase

[SCHEDULE A PRODUCT OVERVIEW](#)

[VIEW OUR RESOURCE GUIDE](#)



18575 Jamboree Rd, Suite 600  
Irvine, CA 92612  
949.438.7300 • [info@spintouch.com](mailto:info@spintouch.com)



**DOWNLOAD**  
THE TRIAL TODAY



# PRICE PACKAGES

<div>myShowcase <b>CLASSIC</b></div> <div><div>\$215 / per month</div><div>\$2,580 billed annually<sup>1</sup></div></div> <div><div>\$1,695 Single Event License<sup>1</sup></div><div>\$6,500 Lifetime License<sup>2</sup></div></div> <div><div>✓ Create unlimited interactive galleries</div><div>✓ Intuitive Content Management System (CMS) ?</div><div>✓ Easily add HD and 4K digital assets</div><div>✓ Customizable templates, layouts &amp; fonts</div><div>✓ One-on-one screen share tutorial</div><div>✓ Fast &amp; responsive phone/email support</div></div>	<div><div>Most Popular</div>myShowcase <b>PREMIUM</b></div> <div><div>\$295 / per month</div><div>\$3,540 billed annually<sup>1</sup></div></div> <div><div>\$2,295 Single Event License<sup>1</sup></div><div>\$8,750 Lifetime License<sup>2</sup></div></div> <div><div>✓ myShowcase Classic features</div><div>✓ Build multiple presentations</div><div>✓ Search options for tagged media</div><div>✓ Built-in secure web browser</div><div>✓ Share content directly via email ?</div><div>✓ Full analytics data &amp; capture unlimited leads ?</div></div>	<div>myShowcase <b>PRO</b></div> <div><div>\$415 / per month</div><div>\$4,980 billed annually<sup>1</sup></div></div> <div><div>\$3,195 Single Event License<sup>1</sup></div><div>\$12,500 Lifetime License<sup>2</sup></div></div> <div><div>✓ myShowcase Premium features</div><div>✓ Multi User Interface/Experience ?</div><div>✓ Omni-directional rotation ?</div><div>✓ Custom resolution capable</div><div>✓ Custom develop new features</div><div>✓ Priority support</div></div>
--	---	--

Contact Us for Agency/Resale Pricing • Multiple License Discounts Available

**Support & Software Updates**

<sup>1</sup> Single Event/Annual License - Included

<sup>2</sup> Lifetime License - 1st year included, 15% of license cost per year thereafter (optional)

VIEW DESIGN & IMPLEMENTATION SERVICES